

Typical Bering Sea Transit Clause for Marine Insurance

“Notwithstanding anything contained in this insurance to the contrary, it is hereby agreed that the insured vessel may navigate the Bering Sea on through voyages and provided that:

- (a) the vessel does not enter, navigate or remain north of 54° 30' N. Lat. (some, not all); and
- (b) the vessel enters and exits west of Buldir Island or through the Amchitka, Amukta or Unimak Passes.....”

(See complete clause from required navigation equipment.)

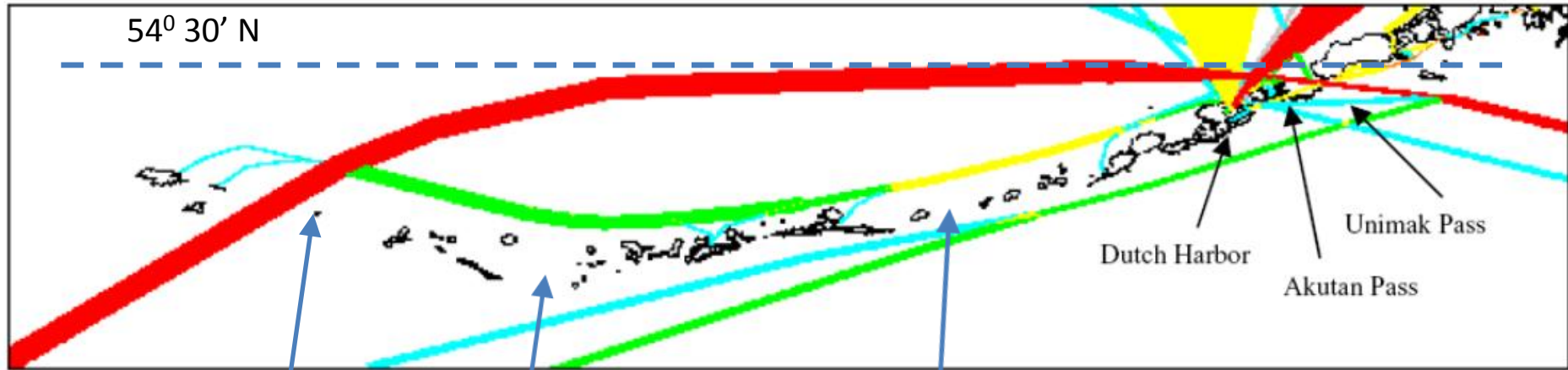


Figure 2-6 Traffic Plot for All Vessel Types for Future Year (2034)

Buldir
Island

Amchitka
Pass

Amukta
Pass

Traffic plot projection from Aleutian Islands Risk Assessment. 2010. *Phase A-Preliminary Risk Assessment, Task 2A: Marine Spill Frequency and Size Report*. Report no. / DNV ref no: EP007543-1 Rev. 4, September 2010

Table 2-5 Key to Vessel Transit Plots

| Color | Transit Frequency (ship movements per day within each calculation location) |
|--------------|--|
| | 0.0 to 0.1 |
| | 0.1 to 0.5 |
| | 0.5 to 1 |
| | 1 to 5 |
| | 5 to 10 |
| | > 10 |

Reference: Aleutian Islands Risk Assessment. 2010. *Phase A- Preliminary Risk Assessment, Task 2A: Marine Spill Frequency and Size Report*. Report no. / DNV ref no: EP007543-1 Rev. 4, September 2010

AIS Plots on the following pages shown use of Amchitka and Amukta Passes

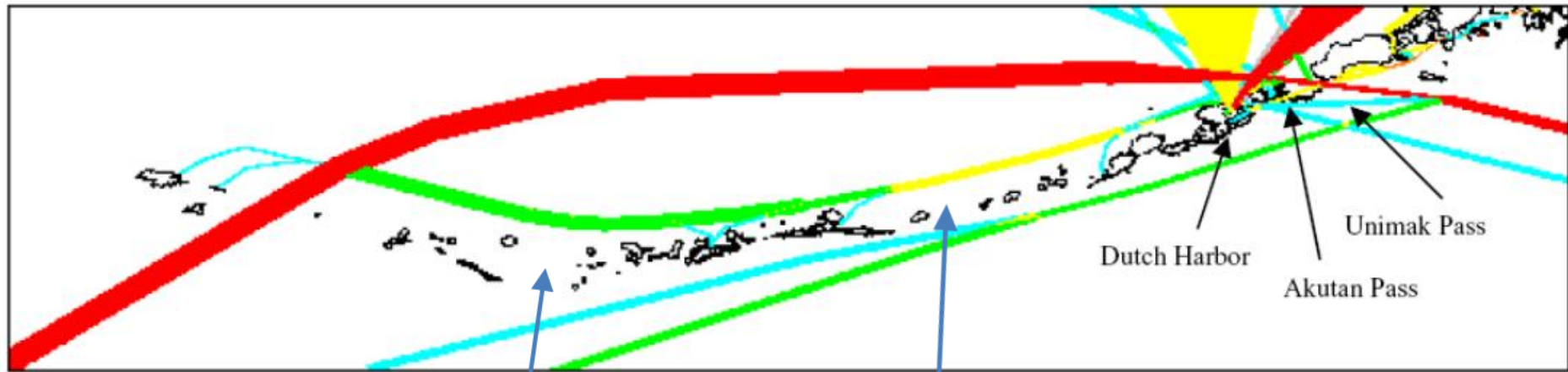


Figure 2-6 Traffic Plot for All Vessel Types for Future Year (2034)

Amchitka
Pass

Amukta
Pass

Unimak Pass Traffic



SKY JADE

MMSI/IMO: 353947000 / 9399088

Lat.: 53°50'16.15"N(53.837818)

Lng.: 169°52'34.78"W(-169.876328)

Type: Cargo ship

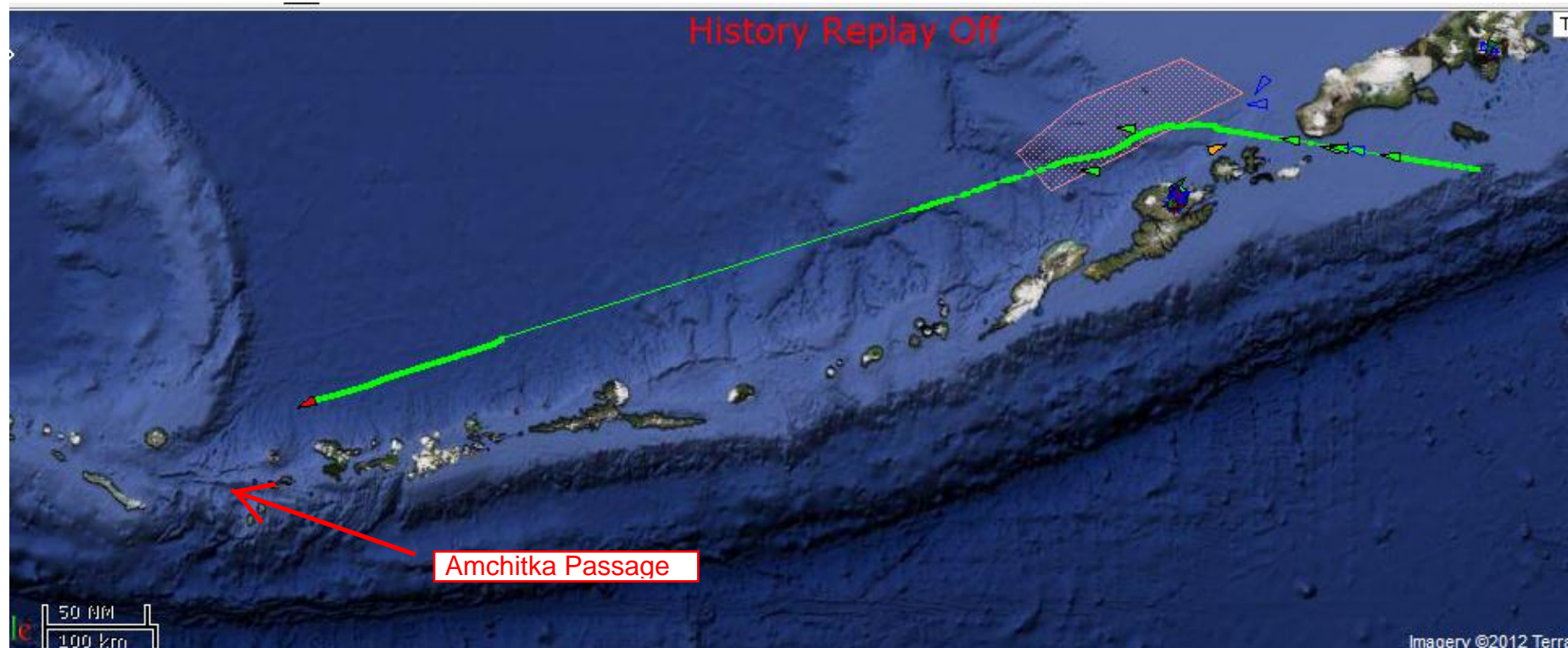
Nav.Stat.: Under way using engine

Speed/Course: 8.5knt(9.8MPH) / 251.6°

Dest.: HK HKG

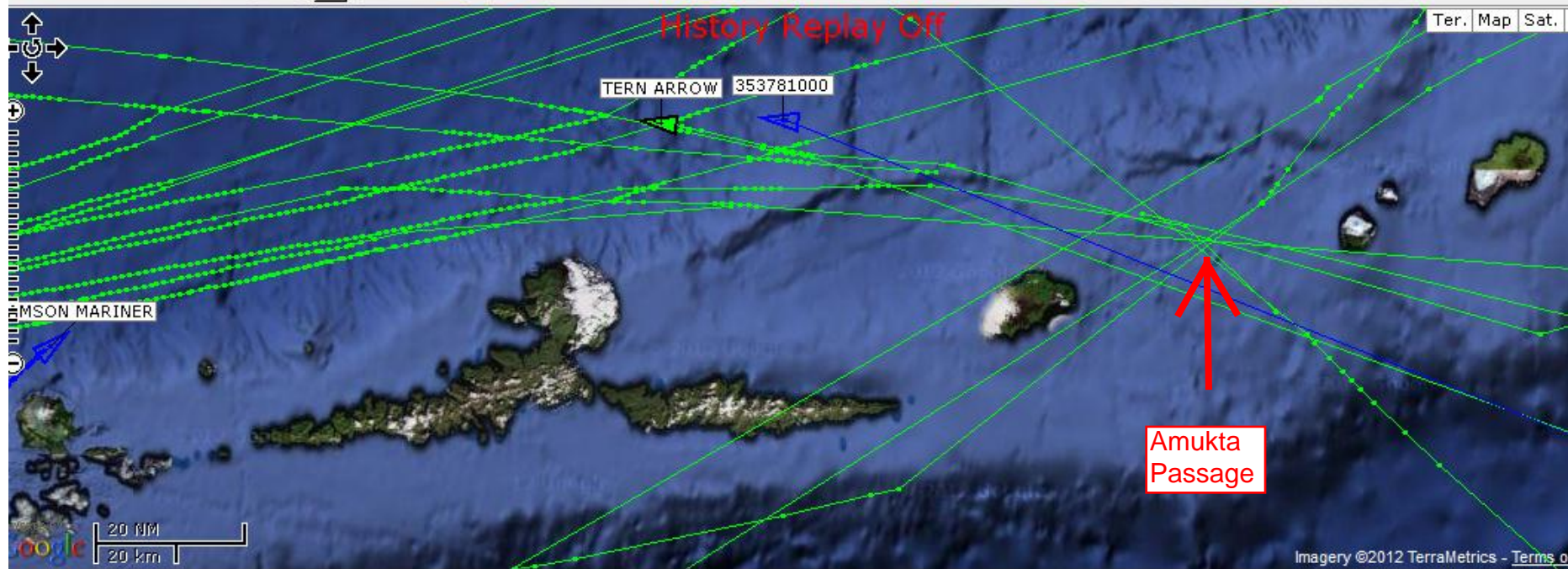
ETA: 12/27/2012 12:00 PM

UTC: 12/12/2012 12:12 PM



Vessels Transiting Through Aleutian Chain East of Atka

Note: Lines drawn over islands are straight lines between AIS signal lost and AIS signal reacquired.



MILLION BELL

MMSI/IMO: 373921000 / 9640607

Lat.: 52°52'45.23"N(52.879230)

Lng.: 167°14'33.41"W(-167.242615)

Type: Cargo ship

Nav.Stat.: Under way using engine

Speed/Course: 10.5knt(12.1MPH) / 253.7°

Dest.: QUANZHOU,CHINA

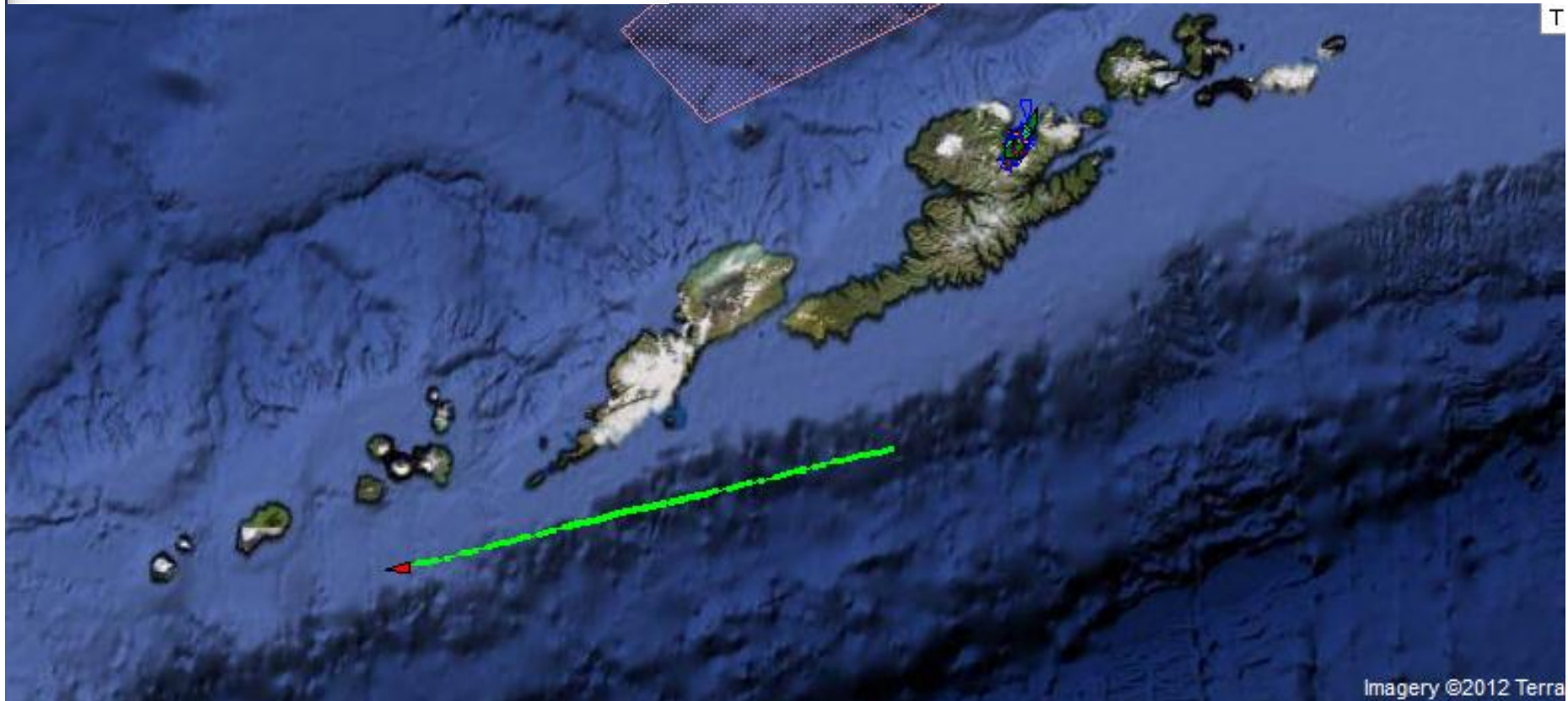
ETA: 12/23/2012 12:00 PM

UTC: 12/13/2012 12:04 PM

Received: 10 hr 30 min ago

Cargo Vessel MILLION BELL

Approaching Amukta Passage

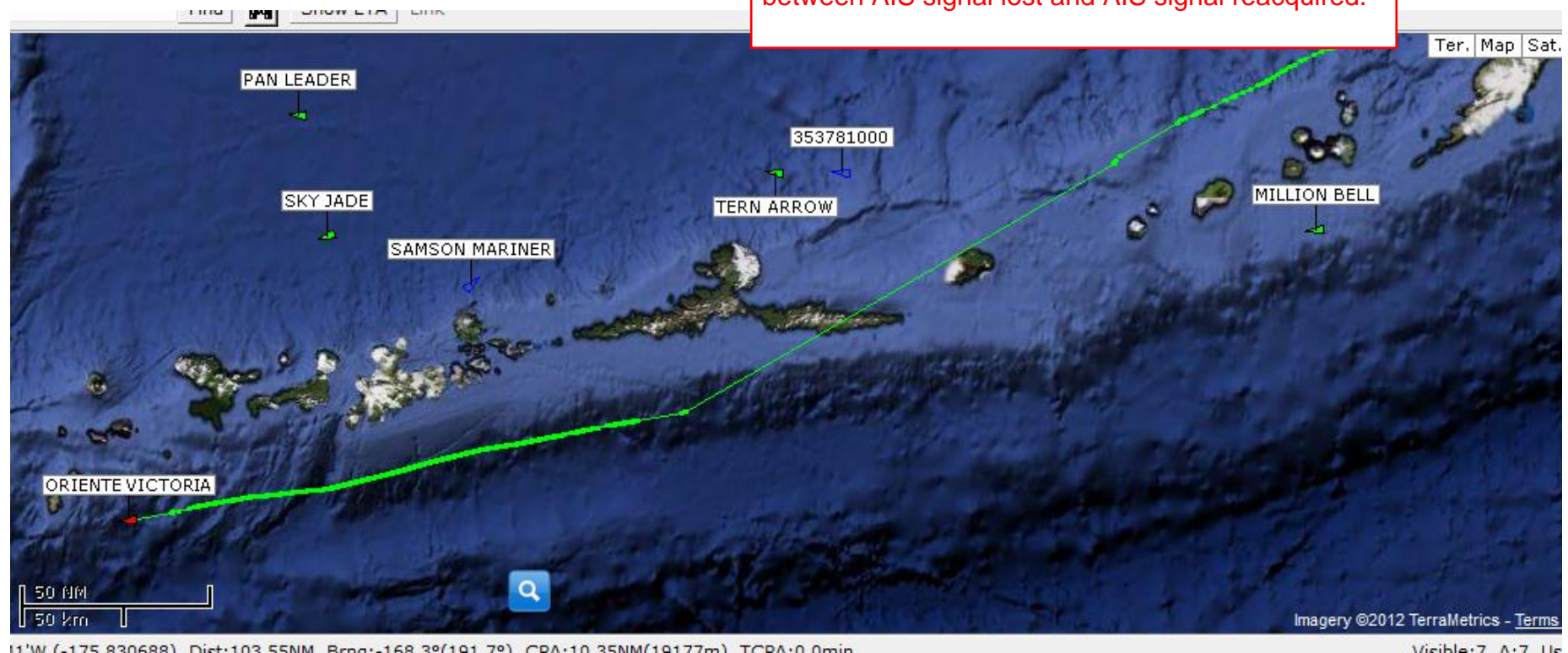


ORIENTE VICTORIA

MMSI/IMO: 353986000 / 9180334
Lat.: 51°28'20.88"N(51.472466)
Lng.: 176°09'30.52"W(-176.158478)
Type: Cargo ship
Nav.Stat.: Under way using engine
Speed/Course: 9.4knt(10.8MPH) / 258.0°
Dest.: JP NAO
ETA: 12/18/2012 5:17 AM
UTC: 12/13/2012 12:25 PM
Received: 10 hr 21 min ago

Cargo Vessel Oriente Victoria

SW transit through Amukta Passage.
Note: Line drawn over Amlia Island is straight line between AIS signal lost and AIS signal reacquired.



TERN ARROW

MMSI/IMO: 308337000 / 8316730

Lat./Lng.: 52°43.820'N / 173°50.730'W

Nearest MM: n/a

Type: Cargo ship

Nav.Stat.: Under way using engine

Speed/Course: 11.1knt(12.8MPH) / 278.0°

Length/Beam: 188m / 29m

Dest.: TAICANG

ETA: 12/25/2012 2:00 AM

UTC: 12/13/2012 10:40 PM

Received: 0 min ago

Cargo Vessel TERN ARROW

Transit WNW through Amukta Passage



Cargo Ship Oriente Victoria

Passing south through Amukta Passage

